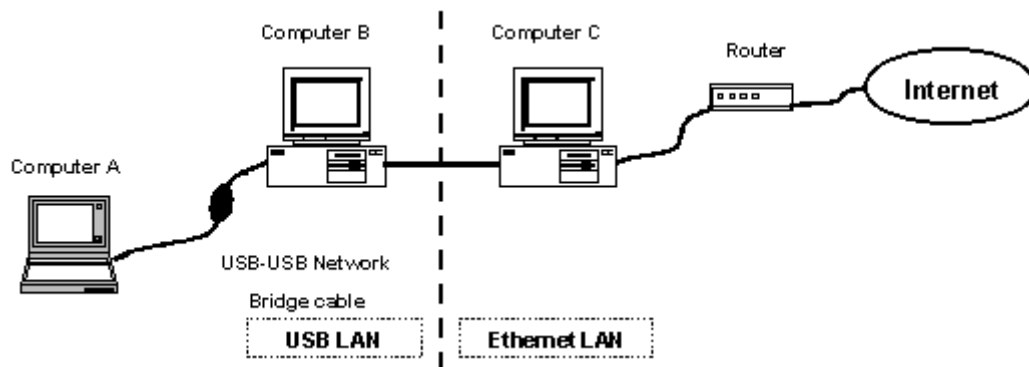


USB Network Link Cable

Congratulations on your purchase of the USB-USB Network Bridge cable. This unique cable allows you to easily construct a network via USB port and share all the resource such as files, printers peripheral equipment, and more.

Please follow the steps to install the driver in your computer.

※ Connection



Network Construction :

- **Computer A** : Connects Computer B with USB-USB Network Bridge Cable.
- **Computer B** : The **Bridge Computer** which connects computer A through USB- USB Network Bridge Cable and connects Computer C with an Ethernet Adapter.
- **Computer C** : One PC of the Ethernet LAN, connects Computer B with an Ethernet Adapter and can access the internet directly.

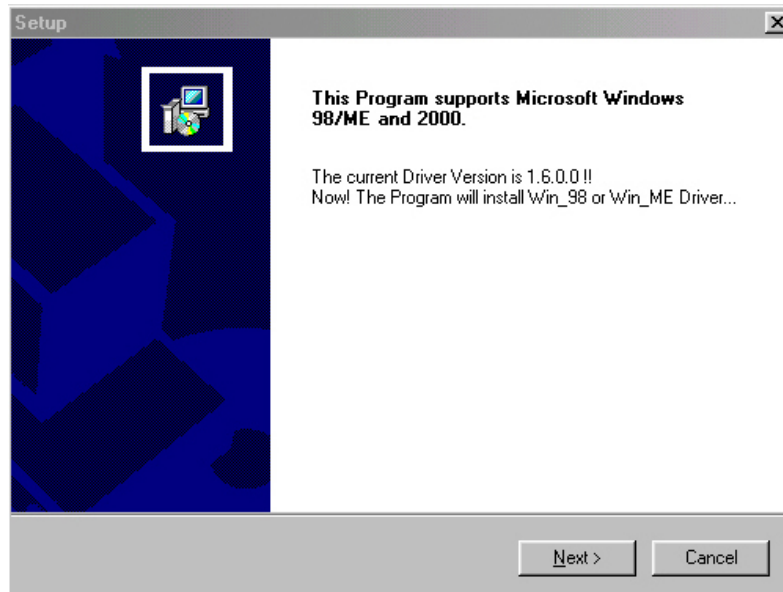
Driver Installation :

Note : Please install driver in Computer A & Computer B.

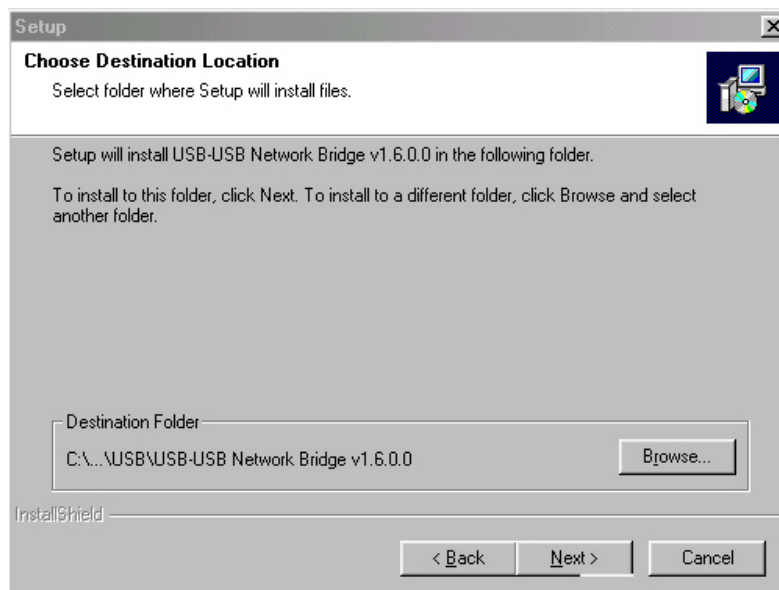
Before you start installing the driver, **please don't plug your USB-USB Network Bridge Cable into the USB port of your computer.** Follow the step below to install the USB-USB Network Bridge driver.

1. Power on the computers where you will connect USB-USB Network Bridge Cable and make sure that the USB port is enabled and working properly.
2. Insert the USB-USB Network Bridge driver diskette into the floppy disk drive and run the **USB-USB Network Bridge 1.6.0.0** program inside the driver diskette.
3. The install Shield Wizard will guide you step-by-step to complete the installation process.

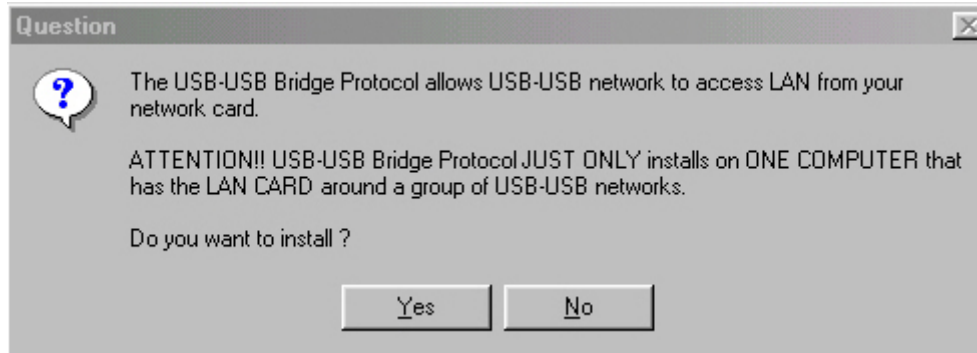
4. When the program is running, it will show as follows:



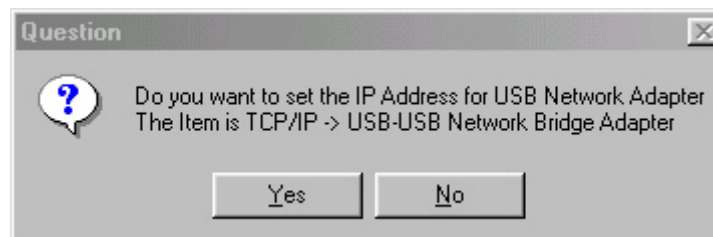
※ Click “Next” To Continue ~



※ Select the folder
Click “Next” To Continue ~



- ※ If you are installing the driver in Computer A, Please click “No”.
- ※ If you are installing the driver in Computer B, Please click “Yes”.



- ※ You do not have to setup the IP Address, so please click “No”

- ※ Please restart the computer.
 - ※ Please install the driver in another computer A/B.
 - ※ Note: Please setup 2 PCs in the same “**Workgroup**” and **Different Host Name**.
-

After finished the steps as above.

Please check the “Network Neighborhood”.

You will see each other in Computer A and B.

That means you are connecting with “Intranet”.

- ※ If you will connect with Internet. Please follow the steps.
 1. Before setup, please make sure Internet of “Computer B” is available.
 2. Please setup up Computer A&B as follows:
 3. Move your cursor to “Network Neighborhood” and click right button.
 4. Go to “Properties” and then “Configuration”.
 5. Choose “TCP/IP->USB-USB Network Bridge Adapter”. Click “Properties”.
 6. Please choose “DNS Configuration”. **Enable DNS**.
 7. Please setup your “**Host Name**” and **Domain (Workgroup)**.
 8. Enter your DNS server.
 9. Restart your computer.
 10. Your computer A will connect with Internet.